



Stolen Takeuchi TB016 Hidden in Stolen Transit Recovered 26/01/15



This recovery was the first operation since the Automatrics / AVCIS (ACPO Vehicle Crime Intelligence Service) joint support partner agreement was finalised just few days earlier.

The AVCIS partner agreement with Automatrics focus is on the safe recovery of stolen vehicles, including communication assistance with national and international law enforcement.



Stolen Takeuchi recovered despite it being hidden inside a Transit.

Midlands based Plant Hire clients reported a mini digger stolen from a Birmingham work-site over the weekend.

The Automatrics MTrack device was remotely activated and soon reported a cell location in Wigan, but no GPS signal was achieved. An Automatrics finder was dispatched to use radio direction finding equipment to locate the digger.



AVCIS officers have been equipped with Automatrics radio tracking technology to aid recovery operations subject to AVCIS resource availability.

Radio finders, when required use hand-held radio direction receivers to home-in on the Automatrics MTrack's audibly silent but secret radio frequency. As no GPS signals were received, the digger was located with embedded radio finding technology

The Automatrics MTrack Stolen Vehicle tracking system is the preferred choice for many plant owners as it is especially suited to the higher protection needs of plant equipment. Despite the criminals searching for a wired tracking device the Automatrics MTrack self powered system could not be found.

This unique tracking system has self powered or vehicle powered options.

The advanced three layer location technology enables any vehicle to be tracked and recovered even in the most challenging environments. Such as underground car parks, in the back of a van or inside a shipping container.

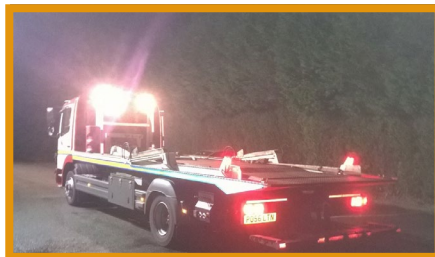
This quick find, returning a TB016 back to it's rightful owner with the support of the Greater Manchester Police demonstrates why Automatrics' could reasonably claim to provide:

The Ultimate Theft Recovery Service



The 1.5 Ton Takeuchi Mini excavator had been carefully loaded inside a stolen Transit van and parked up in a large car park .

The criminals likely hoped to defeat any GPS tracker by placing it inside the van to block low powered GPS satellite signals whilst they disconnected the vehicle battery. But, neither external power or GPS satellites are needed for Automatrics MTrack. AVCIS were contacted to run checks and Greater Manchester Police arrived in minutes to recover the vehicle to a safe compound.



Ultimately the Automatrics MTrack being self powered and covertly hidden was unaffected by the security systems attack.

