

## Metropolitan Police Support



# Mtrack "You can run but you can't hide"

## Stolen Porsche drives for 3 hours trying to shake off mtrack

One Specialist hire car company are celebrating this weekend following the safe return of not one but two stolen vehicles with help from the UK Police and mtrack.



## Stolen Porsche 911 C2S

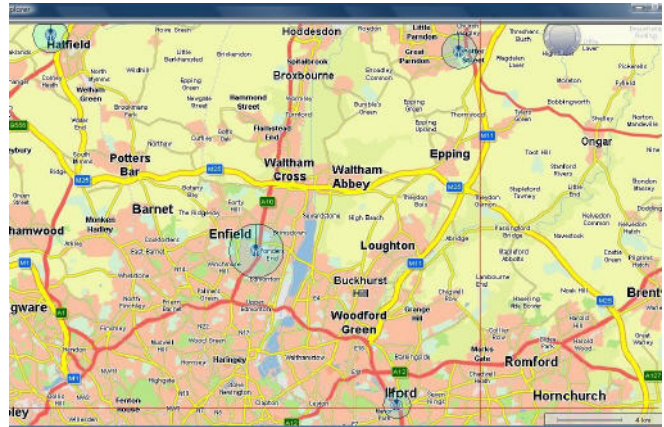
On the 5th February 2010, UK Police were pleased to report a believed stolen Range Rover found inside a steel container to the owners of one of the UK's top specialist car hire firms.

The theft could have cost the company dearly as they hadn't realised the vehicle was missing. Owners were jubilant at the news that the Range Rover would now be safely returned.

However, following further investigation, team members soon realised the same fraudulently hirer also hired a £60K 2009 Porsche 911. The alarm was raised to Automatics who were asked to help recover the vehicle using the Thatcham Quality Accredited Mtrackpro which had been installed to protect the vehicle.

Criminals will now often revert to fraud and deception to target high value vehicle theft as vehicle security becomes tougher for thieves to crack. The criminals involved in this two vehicle scam having lost the Range Rover seemed keen to retain the Porsche, as the vehicle circled northern London to avoid recovery.

The Mtrackpro unit in the Porsche was installed by TrackNav and employs three tracking technologies to support the safe recovery of protected assets.



## Porsche Evasive Route

In this recovery operation all three methods of location were utilised. The accurate GPS data pinpointed the vehicle at an address in Ilford, but prior to the recovery team reaching the location the Porsche departed to start a 75 mile circular pursuit.

Leaving Ilford the Porsche traveled north via the M11 to seek shelter in Harlow, keeping to local roads for a period before then heading back down the M11, west along the M25 to Enfield. Here again the car kept to the local roads and then rejoined the M25 heading west via A1(M) north to Hatfield.

The Automatics find team using GSM cell site location homed in on the asset and picked up the radio signal in Hatfield.

The radio signal was traced to the stolen Porsche which had been parked outside a roadside cafe in the centre of Harlow, with the driver at the wheel, engine running and the lights on.

The find team in a move to avoid detection drove by and returned a minute or so later only to discover the Porsche had immediately taken off.

Following regular GSM positional updates, approximately fifty minutes later the find team were guided to rendezvous with Metropolitan Police officers outside the original Ilford address where the car appeared abandoned.

Vehicle owners arrived to recover the Porsche and safely deliver it back to their HQ. Owners quickly thanked the Automatics find team, TrackNav and the police for what turned out to be a very successful recovery operation.



Automatics Limited  
+44 (0) 1329 663812

[www.mtrack.co.uk](http://www.mtrack.co.uk)

