



# Yorkshire Police Help Recover Two Stolen Tractors

## TWO Stolen Tractors Recovered

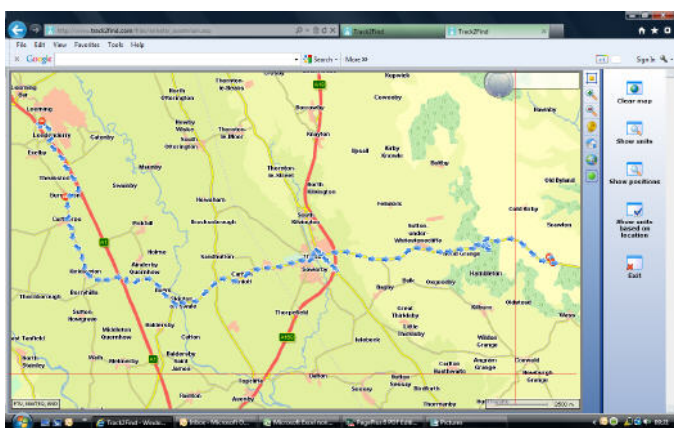
A Yorkshire farmer was celebrating the safe recovery of not one but two of his valuable New Holland tractors following their theft from his yard overnight on the 7th December 2011.

Both tractors had been protected with dedicated mtrack theft recovery trackers, providing the owner with the reassurance that Automatics 24/7 monitoring service would then be able to help report theft locations to enable recovery.

**New Holland Tractors with a combined Value over £80K**

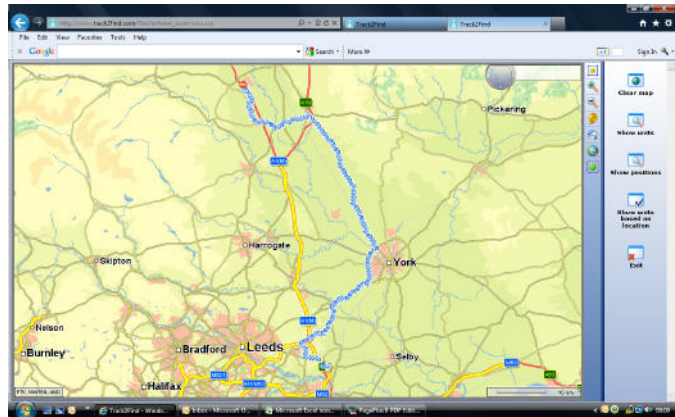


### 1st Tractor Recovered by North Yorkshire Police



The first theft started at around 9.30 PM on the 7th December with the tractor traveling along minor roads for a 1 hr or so before the tractor then went off road into fields and stopped just before a wooded area .

### 2nd Tractor Recovered by South Yorkshire Police



The second tractor theft started at around 5 AM on the 8th December initially the thieves followed a similar route before diverting south towards York, until they finally ending up close to Junction 42 on the A1 (M)

This double tractor theft reinforces theft loss statistics presented at the first ACPO Rural Crime Seminar held last month at Kettering Conference Centre, with tractor theft remaining a significant problem for owners and Insurance companies. At the seminar Matthew Scott the Chief Claims Manager for NFU Mutual reported that Rural Crime theft loss had cost the company a staggering £50 million in 2010.

For these mtrack protected tractors recovery was anticipated with both units immediately reporting back positions some 20 miles to the North and South of York. Automatics 24/7 alarm monitoring operators directed South Yorkshire Police to one tractor location, with officers taking just 45 minutes to find the first tractor hidden behind trees just back from the roadside.

Meanwhile North Yorkshire Police had a more difficult task requiring them to venture on foot to reach the second tractor which was discovered bogged down at the back of a large field stopping just short of woodlands.

\* Thatcham Accreditation is the certification mark of Thatcham MIRRC & Complies with The British Insurance Quality Accreditation Process Industry

